

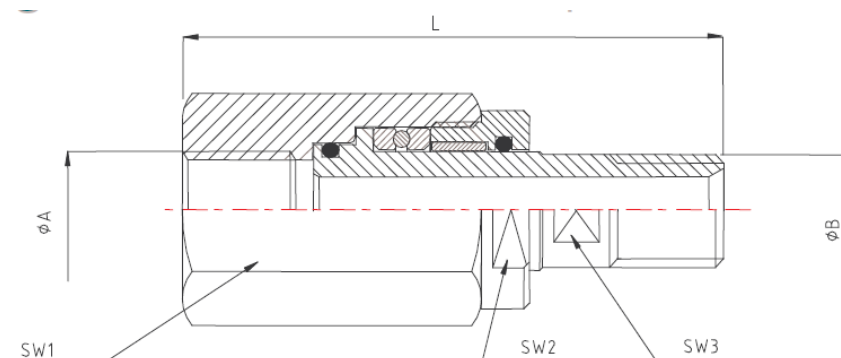
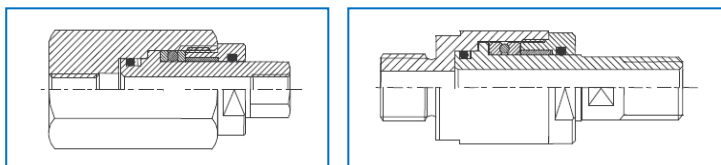
Straight Swivel Joint

Slow Speed - 316 Stainless Steel

- Rotating connection between two oil-hydraulic elements avoiding twisting
- Rotation Speed: 5 – 10 rpm
- Different combinations between $\varnothing A$ and B on request
- Standard Thread: BSPP/
other threads on request



- Female/Female and Male/Male versions on request

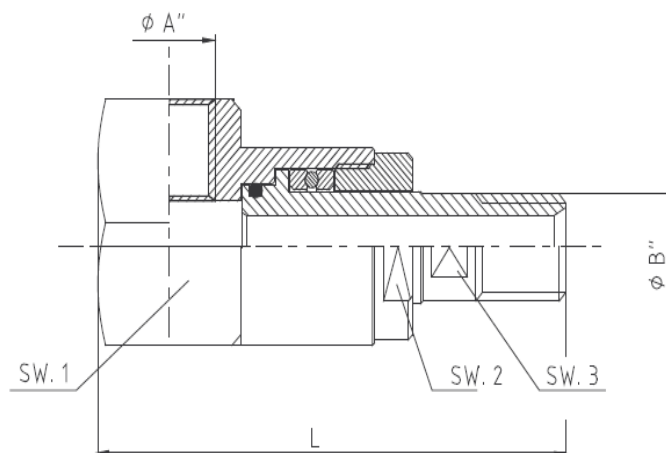


$\varnothing A$ -xx inch	$\varnothing B$ inch	L mm.	SW 1 mm.	SW 2 mm.	SW 3 mm.	WP bar
1/4"-06	1/4"	75	27	24	11	350
3/8"-09	3/8"	88	34	30	14	350
1/2"-13	1/2"	101	36	32	18	300
3/4"-19	3/4"	110	45	40	24	250
1"-25	1"	124	$\varnothing 55$	50	30	250
1" 1/4-30	1" 1/4	129	$\varnothing 60$	55	38	180
1" 1/2-40	1" 1/2	138	$\varnothing 75$	68	41	150
2"-50	2"	149	$\varnothing 85$	80	55	150

90° Swivel Joint

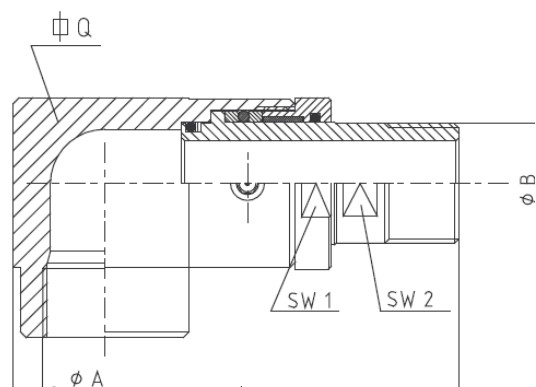
Slow speed - 316 SS

- Rotating connection between two oil-hydraulic elements avoiding twisting
- Rotation Speed: 5 – 10 rpm
- Different combinations between $\varnothing A$ and B on request
- Standard Thread: BSPP/ other threads on request
- Female/Female and Male/Male versions on request



$\varnothing A$ -xx inch	$\varnothing B$ mm.	L mm.	SW 1 mm.	SW 2 mm.	SW 3 mm.	P max bar
1/4"-06	1/4"	78	32	21	11	350
3/8"-09	3/8"	98	36	27	14	300
1/2"-13	1/2"	106	46	32	18	300
3/4"-19	3/4"	118	50	37	24	250
1"-25	1"	142	60	46	30	250

Over 1": Square Body Lathed



$\varnothing A$ -xx inch	$\varnothing B$ inch	L mm.	SW 1 mm.	SW 2 mm.	Q mm.	WP bar
1 1/4"-30	1 1/4"	155	55	38	60	180
1 1/2"-40	1 1/2"	170	70	41	75	150
2"-50	2"	190	80	55	95	150