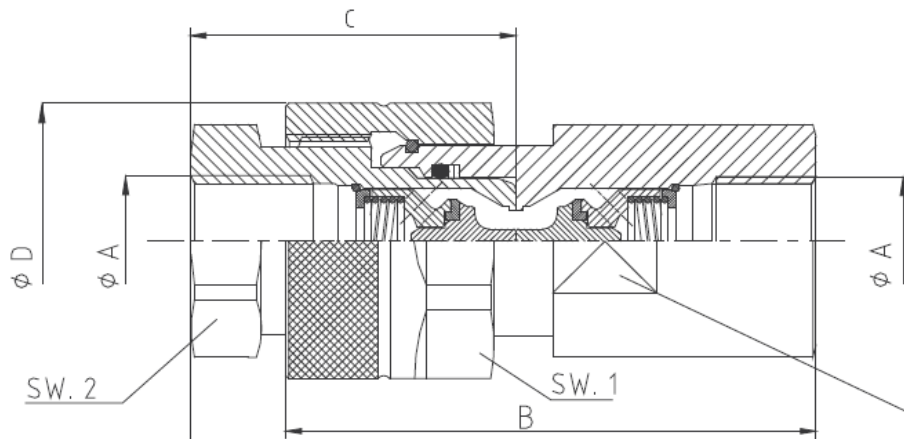
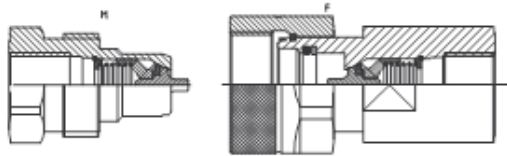


# SC750 - Screw Couplings Series

up to 750Bar, 316 Stainless steel

- Standard Threads: BSPP/  
other threads on request
- Connection by rotating the  
screwed sleeve
- Viton Seals or else on  
request
- PTFE Antiextrusion BK rings
- High-Pressure Use
- Burstpressure: 2,5 times working pressure
- Special Aluminium Dust Cover devices  
available
- Interchangeable with the Faster VVS series



ØA-xx inch	B mm.	C mm.	D mm.	L mm.	SW 1 mm.	SW 2 mm.	SW 3 mm.	S <sub>2</sub> mm. <sup>2</sup>	WP Bar	M Kg.
1/4"-06	68	43	30	84	27	25	22	12.5	750	0.30
3/8"-09	75	48	40	89.5	36	32	27	30	650	0.55
1/2"-13	86.5	53	45	102	41	34	34	65	650	0.78
3/4"-19	105	63	55	121	50	46	41	95	500	1.40
1"-25	120	72	60	136	55	50	50	138	460	2.40
1"1/4-30	153	86	80	167	75	65 <sub>2 faces</sub>	65	387	400	3.90
1"1/2-40	170	95	98	190	90	80 <sub>2 faces</sub>	75	445	360	6.40
2"-50	205	118	129	227	125	110 <sub>2 faces</sub>	100	~700	210	13.90